

***IWRMP TARGETED WATERSHED PROTECTIONS & ENHANCEMENT
LAND USE AND ECONOMIC ANALYSIS PROJECT***

**KITTITAS COUNTY
CITIZENS ADVISORY COMMITTEE
MEETING No. 1**

*Swauk Teanaway Grange
October 6, 2012*

WELCOME & INTRODUCTIONS

- **Welcome & Thank you!**
- **Citizens Advisory Committee Members** *(Introductions)*
- **Kittitas County Participants**
 - Paul Jewell, County Commissioner, District #1
 - Kirk Holmes, Public Works Director *(Project Manager)*
- **Consultant Participants**
 - John Knutson, PE, URS Corporation *(Meeting Leader)*
 - Amy Danberg, PRR Inc. *(Meeting Facilitator)*
 - Will Guyton, URS Corporation

WHY YOU ARE HERE



AGENDA

- ✓ Welcome & Introductions
- ✓ Why You Are Here
 - IWRMP Background, Current Status, & Future Efforts
 - IWRMP Targeted Watershed Protections & Enhancement Component
 - CAC Mission
 - CAC Operations & Work Plan
 - CAC Meetings
 - Wrap Up Discussion & Review of CAC Member Interests



IWRMP BACKGROUND

The most comprehensive effort to date in proposing water resource and habitat protection and restoration solutions in the Yakima Basin.

IWRMP BACKGROUND

- Integrated federal/state project
- Workgroup convened to create plan in June 2009
- Builds on studies going back to 1979
- Cost = Up to \$4 billion over 20 years

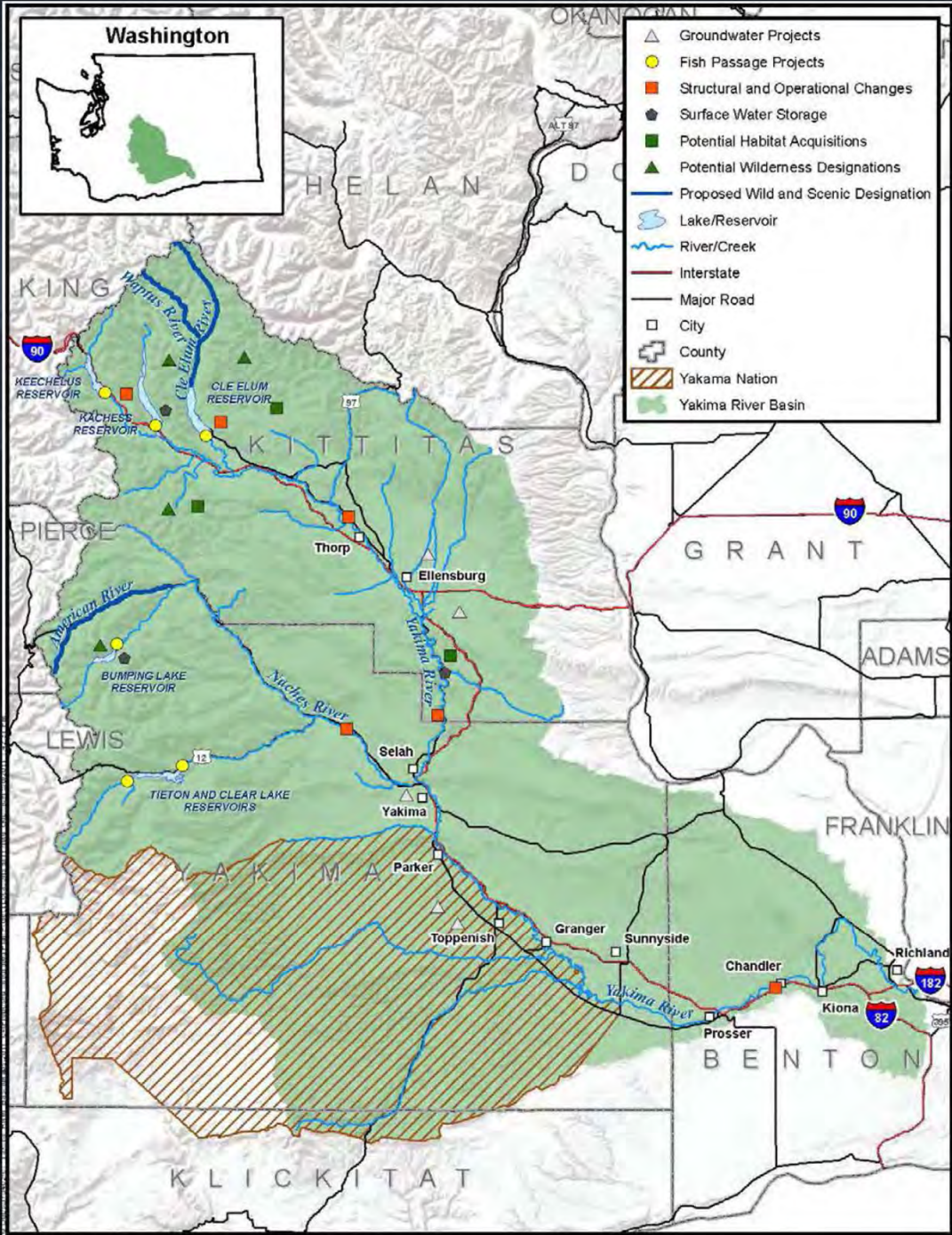
IWRMP BACKGROUND

- **IWRMP Purpose:** provide an approach to improve water management in the Yakima River Basin through regional solutions
- **IWRMP Goals**
 - Protect, mitigate, and enhance fish and wildlife habitat
 - Provide increased operational flexibility to manage instream flows to meet ecological objectives
 - Improve the reliability of the water supply for irrigation, municipal supply, and domestic uses

IWRMP BACKGROUND

Elements of the IWRMP include:

1. Fish Passage
2. Structural and operation changes
3. Surface water storage
4. Groundwater storage
5. Habitat protection and enhancement
6. Enhanced water conservation
7. Market-based reallocation



IWRMP BACKGROUND

Remaining uncertainties:

- Federal, State, and local participant authorization
- Funding
- Permitting and regulatory approvals
- Will modeled outcomes achieve predicted goals?
- Differing levels of support and priorities from stakeholders

IWRMP CURRENT & FUTURE DEVELOPMENT

- YRBWEP Implementation Subcommittee's Proposal
- Draft Planning Report / Programmatic EIS – Winter 2011/12
- Final Planning Report / Programmatic EIS – Spring 2012

For More Information:

USBR IWRMP Website: <http://www.usbr.gov/pn/programs/yrbwep/2011integratedplan/index.html>

Ecology IWRMP Website: http://www.ecy.wa.gov/programs/wr/cwp/cr_yak_storage.html



TARGETED WATERSHED PROTECTION & ENHANCEMENT COMPONENT (TWPEC)

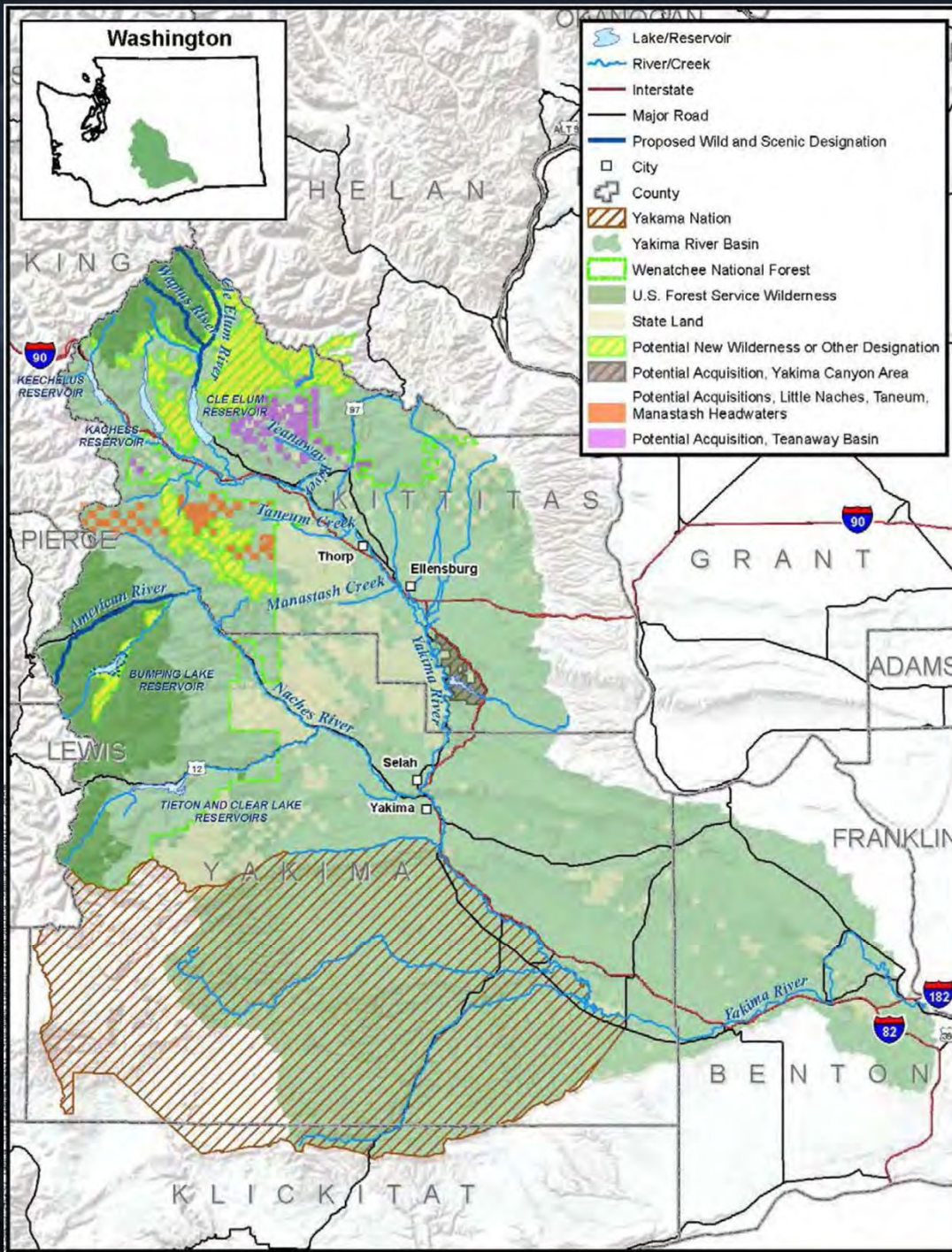
Protection and restoration of key landscapes that provide a high potential for ecosystem and species conservation and restoration both within and outside of the immediate riparian corridor by linking upper and lower watersheds.

TARGETED WATERSHED PROTECTION & ENHANCEMENT COMPONENT (TWPEC)

Targeted acquisitions include:

- 46,000 acres in middle and lower Teanaway River Basin
- 15,000 acres in the Yakima River canyon
- 10,000 acres at the headwaters of the Little Naches River and lands surrounding the headwaters of Taneum and Manastash Creeks.

Alternative sites of equivalent conservation value have been targeted if the preferred sites cannot be acquired.



CAC OPERATIONS & WORK PLAN

MISSION

"It is the mission of the CAC to efficiently develop clear and defensible recommendations for the Kittitas County Board of County Commissioners (BOCC). The CAC's recommendations will address the land use and economic impacts of the TWPEC on Kittitas County, and will be developed in a comprehensive and inclusive manner."

TWPEC = Targeted Watershed Protections and Enhancement Component of the Yakima River Basin Proposed Integrated Water Resources Management Plan

CAC OPERATIONS & WORK PLAN

OBJECTIVES

1. *Identify key land use changes and economic issues*
2. *Conduct an analysis of land use changes and economic impacts*
3. *Quantify TWPEC impacts, benefits, and costs*
4. *Identify compensation methods (if necessary)*
5. *Develop recommendations for the BOCC*
6. *Provide results in time for inclusion in IWRMP programmatic EIS*

CAC OPERATIONS & WORK PLAN

MEMBERSHIP

- *Volunteering Residents & Interested Parties*
- *Kittitas County & Consultants are not CAC Members*
- *CAC Members are Committed to:*
 - *Regular Attendance*
 - *Providing Input and Guidance*
 - *Developing Recommended Compensation Methods*

CAC OPERATIONS & WORK PLAN

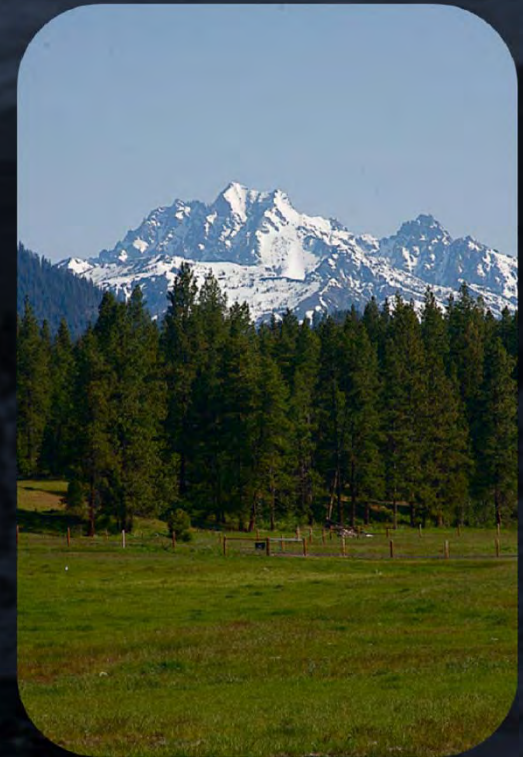
ROLES & RESPONSIBILITIES

- *Meet approximately monthly or bi-monthly*
- *Review and analyze materials before meetings*
- *Proactively identify land use changes and economic issues*
- *Help develop economic solutions and mitigation policies*
- *Membership is voluntary; please notify if resigning*
- *Missing two or more consecutive meetings may result in removal from CAC*

CAC OPERATIONS & WORK PLAN

MEETING GROUND RULES

- *Be “Solution Oriented” and mission focused*
- *Foster open discussions*
- *Mutual respect*
- *Avoid sidebar discussions*
- *Use fact-based decision making*
- *Advocates of committee process*




CAC OPERATIONS & WORK PLAN

MEETING PROCEDURES

- *Role of Consultant Team: develop meeting materials, keeping notes, and meeting organization and facilitation*
- *Consensus decision making*
- *Must be present or provide input alternatively*
- *If consensus cannot be reached:*
 - *Table the issue temporarily (Parking Lot)*
 - *Advisory vote or other voting method*
 - *Present to BOCC (as final alternative)*

CAC MEETINGS

| Meeting & Topic | Approximate Meeting Dates |
|---|--|
|  CAC Meeting 1 <ul style="list-style-type: none">• Meet CAC members• Review mission of the CAC• Review CAC Work Plan• Cover IWRMP background information | October 6, 2011 Cle Elum |
| CAC Meetings 2 and 3 <ul style="list-style-type: none">• Discuss the IWRMP Targeted Watershed Protections and Enhancements Component (TWPEC)• Identify potential direct and indirect positive and negative impacts to Kittitas County land uses and economy from the TWPEC• Identify key land use and economic issues for detailed analysis | <i>October 20, 2011</i> (Ellensburg) and mid-November (Cle Elum) |

CAC MEETINGS

| Meeting & Topic | Approximate Meeting Dates |
|--|---|
| <p>CAC Meeting 4</p> <ul style="list-style-type: none">• Review consultant team land use and economic impact analyses results• Obtain CAC feedback• Discuss possible economic compensation strategies | <p>mid-December (Ellensburg)</p> |
| <p>CAC Meeting 5</p> <ul style="list-style-type: none">• Review and evaluate an array of economic compensation alternatives• Obtain CAC recommendations on the preferred compensation approaches (preferred alternative) | <p>late January 2012 (Cle Elum)</p> |

CAC MEETINGS

| Meeting & Topic | Approximate Meeting Dates |
|--|---|
| <p>Public Open House</p> <ul style="list-style-type: none">• Present process and recommendations to public at an informational open house and allow for comments and questions• Committee members on hand to field questions in an informal format | <p>early February 2012 (Location TBD)</p> |
| <p>CAC Meeting 6 (if needed)</p> <ul style="list-style-type: none">• Adjust recommendations if any significant or trending comments are received from the public open house | <p>Late February 2012 (Ellensburg)</p> |

WRAP-UP DISCUSSION & REVIEW OF CAC MEMBER INTERESTS

